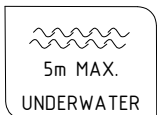
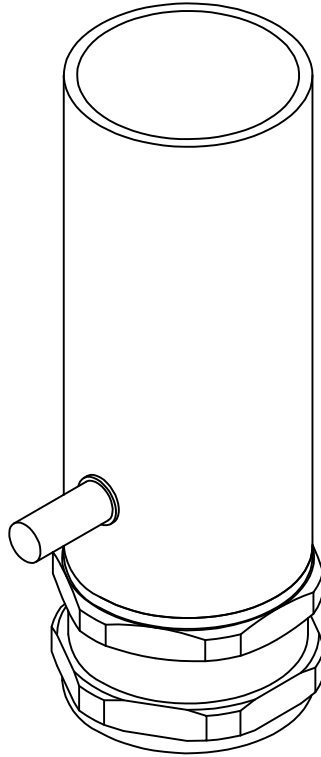


ARPOOL MICRO

INSTALLATION INSTRUCTIONS (HOUSING)



IP68

AISI316L



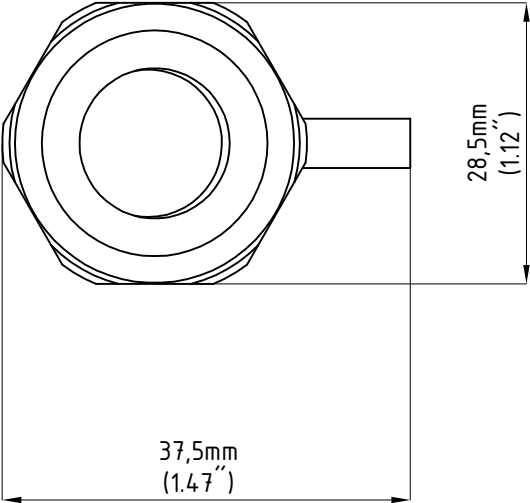
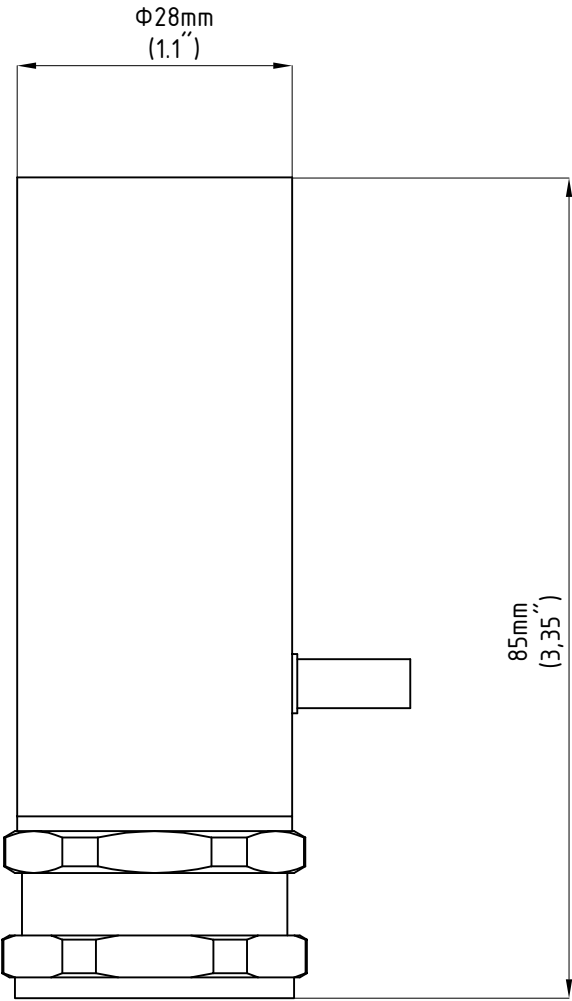
ALL DIMENSIONS ARE GIVEN ACCORDING TO THE SI SYSTEM OF UNITS (MM, KG, °C), ADDITIONAL DIMENSIONS THAT ARE WRITTEN IN BRACKETS, ARE GIVEN ACCORDING TO THE U.S. MEASUREMENT SYSTEM (IN, LBS, °F)

GENERAL REMARKS ON SAFETY :

- READ ALL OF THESE INSTRUCTIONS BEFORE INSTALLATION.
- KEEP ALL OF THE INSTRUCTIONS FOR FUTURE REFERENCE.
- INSTALLATION IS TO BE PERFORMED BY A QUALIFIED CONTRACTOR.
- ALL INSTALLATIONS ARE TO CONFORM TO THE STANDARDS OF THE NATIONAL ELECTRICAL CODE AS WELL AS ALL LOCAL JURISDICTIONAL CODES AND REGULATIONS.
- THE MANUFACTURER ACCEPTS NO RESPONSIBILITY FOR DAMAGE TO PERSONS OR PROPERTY ARISING THROUGH IMPROPER USE OR INSTALLATION.
- HOUSINGS' SURFACES EXPOSED TO THE EFFECTS OF WATER (INCLUDING WATER CONTAINING CHLORINE) ARE MADE OUT OF PPR MATERIAL. PPR MATERIAL IS WELL-SUITED FOR USE IN POOLS DUE TO ITS CHEMICAL RESISTANCE AND DURABILITY.
- FOR WARRANTY CONDITIONS PLEASE CONSULT LOCAL SALES REPRESENTATIVE

HOUSING DIMENSIONS

CONCRETE POOL HOUSING



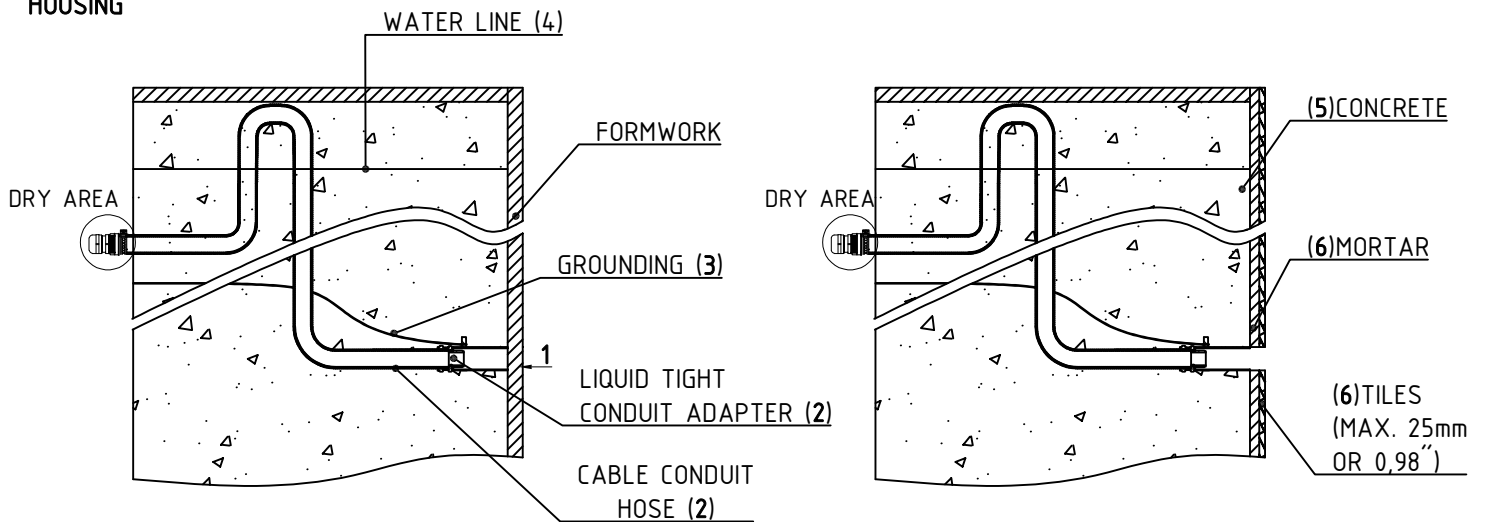
HOUSING INSTALLATION GUIDE

CONCRETE POOL HOUSING

1. POSITION THE ARPOOL INSTALLATION HOUSING AT THE DESIRED LOCATION
2. ATTACH CABLE CONDUIT HOSE TO THE LIQUID TIGHT CONDUIT ADAPTER. (CABLE CONDUIT HOSE SUPPLIED BY MANUFACTURER).
3. CONNECT THE GROUNDING TO THE HOUSING. (THE GROUNDING WIRE NOT SUPPLIED BY MANUFACTURER.)
4. MAKE SURE THE SECTION OF THE CABLE CONDUIT HOSE IS ABOVE THE WATER LINE TO PREVENT WATER DRAINAGE FROM THE POOL THROUGH THE HOSE
5. POUR CONCRETE
6. PUT MORTAR AND TILES

IMPORTANT NOTE:

BEFORE ATTACHING THE HOUSING (1), PROTECT THE HOUSING OPENING WITH TAPE, TO PREVENT EXCESS MATERIAL IN THE HOUSING



CABLE INSTALLATION GUIDE

IMPORTANT NOTE:

WHEN ROUTING THE CABLE CONDUIT HOSE, POSITION THE SECTION OF THE HOSE ABOVE THE WATERLINE TO PREVENT WATER DRAINAGE FROM THE POOL THROUGH THE HOSE

