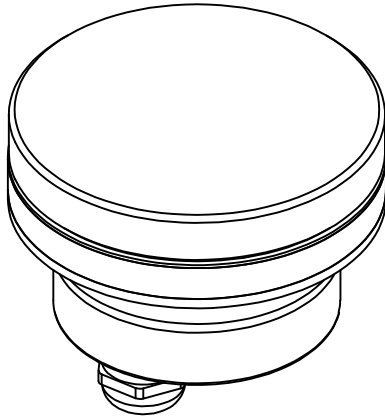


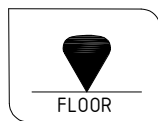
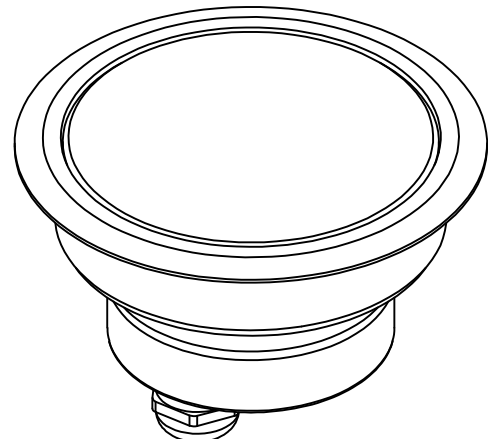
RD 100 FAMILY (RDP 100)

INSTALLATION INSTRUCTIONS (FIXTURE)

TRIMLESS



TRIM



24 VDC



IP67

AL6082

Ta | 40°C

IK10



15000 N



ALL DIMENSIONS ARE GIVEN ACCORDING TO THE SI SYSTEM OF UNITS (mm, kg, °C), ADDITIONAL DIMENSIONS THAT ARE WRITTEN IN BRACKETS, ARE GIVEN ACCORDING TO THE U.S. MEASUREMENT SYSTEM (in, lbs, °F)

GENERAL REMARKS ON SAFETY

- READ ALL OF THESE INSTRUCTIONS BEFORE INSTALLING FIXTURES.
- KEEP ALL OF THE INSTRUCTIONS FOR FUTURE REFERENCE.
- INSTALLATION IS TO BE PERFORMED BY A QUALIFIED ELECTRICIAN ONLY.
- ALL INSTALLATIONS ARE TO CONFORM TO THE STANDARDS OF THE NATIONAL ELECTRICAL CODE AS WELL AS ALL LOCAL JURISDICTIONAL CODES AND REGULATIONS.
- PRODUCT MUST BE INSTALLED IN ACCORDANCE WITH THE APPLICABLE INSTALLATION CODE BY A PERSON FAMILIAR WITH THE CONSTRUCTION AND OPERATION OF THE PRODUCT AND THE HAZARDS INVOLVED.
- TURN OFF POWER BEFORE INSTALLING FIXTURE.
- DO NOT OPEN THE LUMINAIRE AS IT WILL ANNUL THE IP RATING OF LUMINAIRE AND VOID THE WARRANTY.
- THE SURFACE TEMPERATURE OF THE FIXTURE IS $\approx 40^{\circ}\text{C}$ (104°F) AND IMPOSES NO LIMITS ON INSTALLATION.
- CALCULATE THE MAXIMUM POWER CONSUMPTION AND USE APPROPRIATELY SIZED DRIVERS/CONTROLLERS.
- THE EXTERNAL FLEXIBLE CABLE OR CORD OF THIS LUMINAIRE CANNOT BE REPLACED; IF THE CORD IS DAMAGED, THE LUMINAIRE WILL NO LONGER BE USABLE, AND THE LUMINAIRE MUST BE REPLACED.
- LUMINAIRE IS DESIGNED AND TESTED FOR DRIVE OVER TO 15000N AND CANNOT BE USED IN ROAD LINES WHERE THE FIXTURE IS EXPOSED TO A HORIZONTAL STRESS DUE TO BREAKING, ACCELERATION AND CHANGE OF DIRECTION.

WARRANTY

ALL PRODUCTS ARE COVERED BY THIS WARRANTY AND WE MAKE NO OTHER WARRANTIES. THE WARRANTY SHALL APPLY FOR A PERIOD OF THREE (3) YEAR FROM THE DATE OF ORIGINAL PURCHASE - INVOICE DATE. THE WARRANTY ONLY COVERS PRODUCTS INSTALLED AND MAINTAINED IN ACCORDANCE WITH THE INSTRUCTIONS PROVIDED BY THEIR RESPECTIVE MANUFACTURER AND NO WARRANTY IS MADE WITH RESPECT TO ANY OF OUR PRODUCTS THAT ARE OTHERWISE INSTALLED OR MAINTAINED. PRODUCT DIMENSIONS LISTED ARE PROVIDED BY THEIR RESPECTIVE MANUFACTURER AND TO OUR KNOWLEDGE ARE AS ACCURATE AS POSSIBLE. DEFECTS OR FAILURES ARISING DURING SHIPMENT OR DUE TO ALTERATION, MISUSE, NEGLIGENCE, ACCIDENT, THEFT, DEFECTIVE MAINTENANCE, DAMAGE BY AND ACTIONS OF OTHERS, OR WHERE ADEQUATE CARE HAS NOT BEEN TAKEN TO PREVENT CHEMICAL, ICE, OR SNOW DAMAGE TO THE PRODUCT SHALL NOT BE COVERED BY THIS WARRANTY. THE WARRANTY DOES NOT COVER PRODUCTS THAT HAVE BEEN EXPOSED TO TOXIC, NUCLEAR, OR CORROSIVE ENVIRONMENTS, OR WHERE OPERATING TEMPERATURES FALL BELOW -30°C OR EXCEED $+55^{\circ}\text{C}$. DUE TO THE UNSUITABILITY OF MANY CLEANING AGENTS SUCH ASPECTS OF OUR PRODUCTS AS COULD BE DAMAGED BY THEIR USE, FOR EXAMPLE GLASS AND FINISHES, ARE SPECIFICALLY EXCLUDED FROM THE TERMS OF THIS WARRANTY. WARRANTY APPLIES TO ALL MATERIAL FINISHES, CABLING AND GLASS PERFORMANCE UNLESS MECHANICALLY DAMAGED. UNDER THIS WARRANTY FILIX IS NOT LIABLE OR RESPONSIBLE FOR ANY ADDITIONAL CHARGES SUCH AS SHIPPING, TRANSPORTATION OF ADDITIONAL AND NEW ITEMS, LABOR CHARGES RELATED TO REMOVAL OR REPLACEMENT, OR ANY OTHER INCIDENTAL OR CONSEQUENTIAL DAMAGES. ALL ELECTRONIC OR CONSUMABLE COMPONENTS ARE SUBJECT TO REPAIR OR CHANGE OVER TIME UNDER STANDARD REPLACEMENT AND NORMAL SERVICING TERMS WITH OFFICIAL DEALER, DISTRIBUTOR OR MANUFACTURER RATHER THAN WARRANTY TERMS.

DISCLAIMER OF IMPLIED WARRANTIES

EXCEPT AS SET FORTH IN THE LIMITED WARRANTY OR OTHERWISE REQUIRED BY LAW, FILIX LTD. PROVIDES ALL PRODUCTS AS IS AND DISCLAIMS ALL OTHER EXPRESS OR IMPLIED WARRANTIES, INCLUDING BUT NOT LIMITED TO IMPLIED WARRANTIES OF MERCHANTABILITY OR FITNESS FOR A PARTICULAR PURPOSE, AND ALL SUCH WARRANTIES ARE EXPRESSLY DISCLAIMED.

LIMITATION OF DAMAGES

IF DURING THE WARRANTY PERIOD ANY PRODUCT PROVES DEFECTIVE IN MATERIALS OR WORKMANSHIP, OR FAILS TO MEET OUR PUBLISHED PERFORMANCE SPECIFICATIONS FOR THE PRODUCT, FILIX LTD. LIABILITY FOR ANY BREACH OF WARRANTY SHALL BE LIMITED TO REPAIR OR, AT FILIX LTD. OPTION, REPLACEMENT WITH A NONDEFECTIVE PRODUCT OF SUBSTANTIALLY SIMILAR SPECIFICATIONS.

THIS WARRANTY COVERS FILIX LTD. AND IS LIABLE FOR, ONLY THAT WARRANTY COVERAGE AND DAMAGES SPECIFICALLY DETAILED ABOVE. EXCEPT AS MAY OTHERWISE BE REQUIRED BY LAW, FILIX LTD. SHALL NOT BE LIABLE FOR INDIRECT, INCIDENTAL, OR CONSEQUENTIAL DAMAGES, EVEN IF FILIX LTD. HAS BEEN ADVISED OF THE POSSIBILITY OF SUCH DAMAGE. THIS DISCLAIMER APPLIES DURING AND AFTER THE WARRANTY PERIOD. WARRANTY IS INITIATED AND VALID FROM THE SHIPPING DATE.

IF YOU DISCOVER A DEFECT OR MALFUNCTION DURING THE PERIOD TO WHICH THIS WARRANTY APPLIES, REPAIR OR REPLACEMENT IS SUBJECT TO THE PROPER NOTIFICATION AND CONSENT OF FILIX LTD.

WIRE MARKINGS

OPTION WITH SINGLE LED COLOR

- + BLACK WIRE
- WHITE WIRE

OPTION WITH RGBW LED COLOR

- + BLACK WIRE
- R RED WIRE
- G GREEN WIRE
- B ORANGE WIRE
- W WHITE WIRE

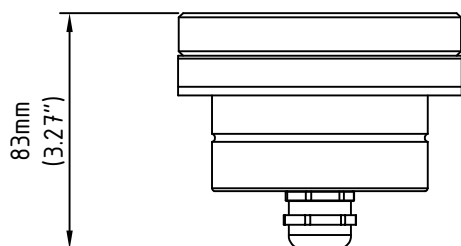
NOTE:

CONTROL GEAR USED TO POWER THIS LUMINAIRE SHALL BE SELV TYPE; HIGHEST ALLOWED U_{out} TO BE MAX 10% OF THE NOMINAL VOLTAGE OF CONTROL GEAR; MAXIMUM ALLOWED WIRING DISTANCE BETWEEN CONTROL GEAR AND LUMINAIRE WITH STANDARD SUPPLIED CABLE IS 9 m OR 30'. INSTALLATION OF LONGER WIRING LENGTHS SHOULD BE DISCUSSED WITH MANUFACTURER PRIOR THE FIXTURE ORDERING.

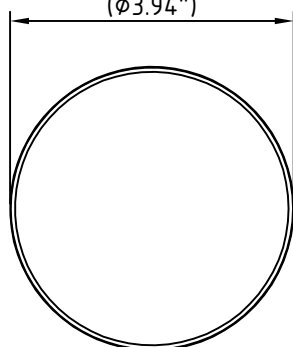
WHERE LUMINAIRE IS DELIVERED WITH CONNECTING LEADS AND WITHOUT A MEANS OF CONNECTION TO THE POWER SUPPLY TERMINAL BLOCKS MAY BE USED (TERMINAL BLOCKS NOT SUPPLIED BY MANUFACTURER). TERMINAL BLOCKS SHALL BE IN THE SAME IP RATING AS THE LUMINAIRE ITSELF, WITH RATED VOLTAGE OF MIN. 400 V AND RATED CONNECTION CAPACITY OF 10A. CONNECTION WIRE ENDS COMING FROM POWER SUPPLY TO BE PREPARED AS TERMINAL BLOCK MANUFACTURER RECOMMENDS. TERMINAL BLOCK SHOULD BE PLACED IN A LOCATION WHERE IT DOESN'T NOT AFFECT THE LUMINAIRE OPERATION.

FIXTURE DIMENSIONS

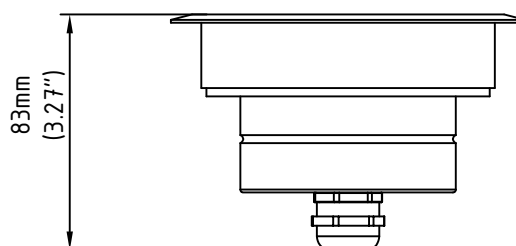
TRIMLESS



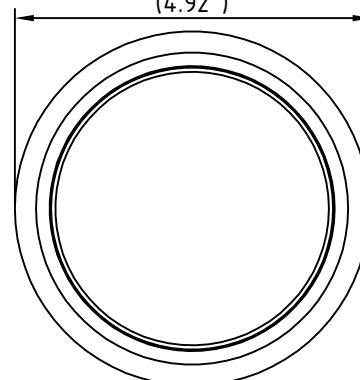
Ø100mm
(Ø3.94")



TRIM



Ø125mm
(4.92")



INSTALLATION GUIDE

1. BEFORE INSTALLING THE FIXTURE REMOVE INSTALLATION HOUSING COVER
2. PULL OUT THE FEED CABLE FROM INSTALLATION HOUSING AND PREPARE CABLE END FOR SPLICE CONNECTION AND MAKE A CONNECTION WITH FIXTURE CABLE (CONNECTION TO BE PERFORMED BY QUALIFIED ELECTRICIAN)
3. AFTER FEED CABLE AND FIXTURE CABLE ARE CONNECTED ARRANGE THE CABLE INSIDE THE HOUSING AND PLACE THE FIXTURE INSIDE THE HOUSING.

NOTE:

TO REMOVE THE FIXTURE FROM HOUSING SUCTION-CUP TOOL SHALL BE USED (SUCTION CUP TOOL IS SOLD SEPARATELY)

